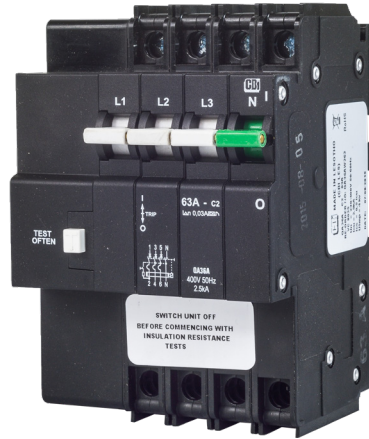


QF36 - Series Earth Leakages



QF36A
Dual (DIN & mini rail) mount

Features

- Hydraulic-magnetic technology
- 100% rating capability, independent of ambient temperature
- Complies with IEC 60947-2
- Ratings 6 to 32 A
- Earth Leakage sensitivity 30 mA, **Type A**
- Three pole plus switched neutral earth leakage protection
- Precision tripping characteristics
- Trip indication with mid-trip position
- Can be switched on immediately after tripping
- Suitable to use for electrical isolation
- Shell designed for easier installation onto busbar
- 57 mm front escutcheon

Applications

- Residential and commercial applications requiring high sensitivity earth leakage protection from electrical shock and fire hazards
- Telecom / datacom equipment
- Lighting control
- UPS equipment
- Alternative energy equipment

Approvals



Hydraulic-Magnetic Circuit Breakers 100% rated, unaffected by ambient temperature

QF36 - Series Earth Leakages

Technical Data

Product Type	QF36
Approvals	IEC 60947-2
Number of Poles	3 + N
Standard Ampere Ratings	6 A to 32 A
Sensitivity	30 mA
Equipment Type Rated Voltage	415 Vac
Ultimate S/C breaking Capacity (Icu)	6 kA

Product Type	QF36
Operating Temperature Range	-40 °C to +85 °C
Mounting Options	Dual (DIN & mini rail) mount
Time Delay Curves	2 (A version only)
Endurance	10000 operations - 1500 with current, 8500 without current (IEC 60947-2 Clause 7.2.4.2)*
Dielectric Strength	1000 - 2000 Vac for one minute (IEC 60947-2 Clause 8.3.3.3)*
Weight	570 g per pole (unpacked)
Altitude	Certification tests done at altitude ≈ 2000 metres. Will operate at higher altitudes.
Shock	10 G (IEC 60068-2-27)
Vibration	1.5 G (IEC 60068-2-6) (sinusoidal wave)
Flammability	I3 - Ignition does not persist at 850 °C after glow wire is withdrawn with an oxygen index of ≥ 28
Toxicity	F1 - Smoke index of ≤ 20 which determines the fume class

Earth Leakage	Wire Size (IEC)	Torque (IEC)	Comments
Main Terminal	0.75 mm ² - 35 mm ²	2.5 Nm	Pozidriv #2 Combi head

QF36 - Series Earth Leakages

Long Code

Example Code: Q-F-36-A---DM-2-32A-30mA-415V----

Group	1	2	3	4	5	6	7	8	9	10	11	12	13
Requirement	Q frame	Type F	1 + pole+N	Overload	No Auxiliary or additional pole	Dual Mount	Medium delay curve 2	Current rating 32 A	Sensitivi- ty 30 mA	Voltage 415 Vac	Future use	Future use	Future use
Long Code	Q	F	36	A	-	DM	2	32 A	30 mA	415 V	-	-	-

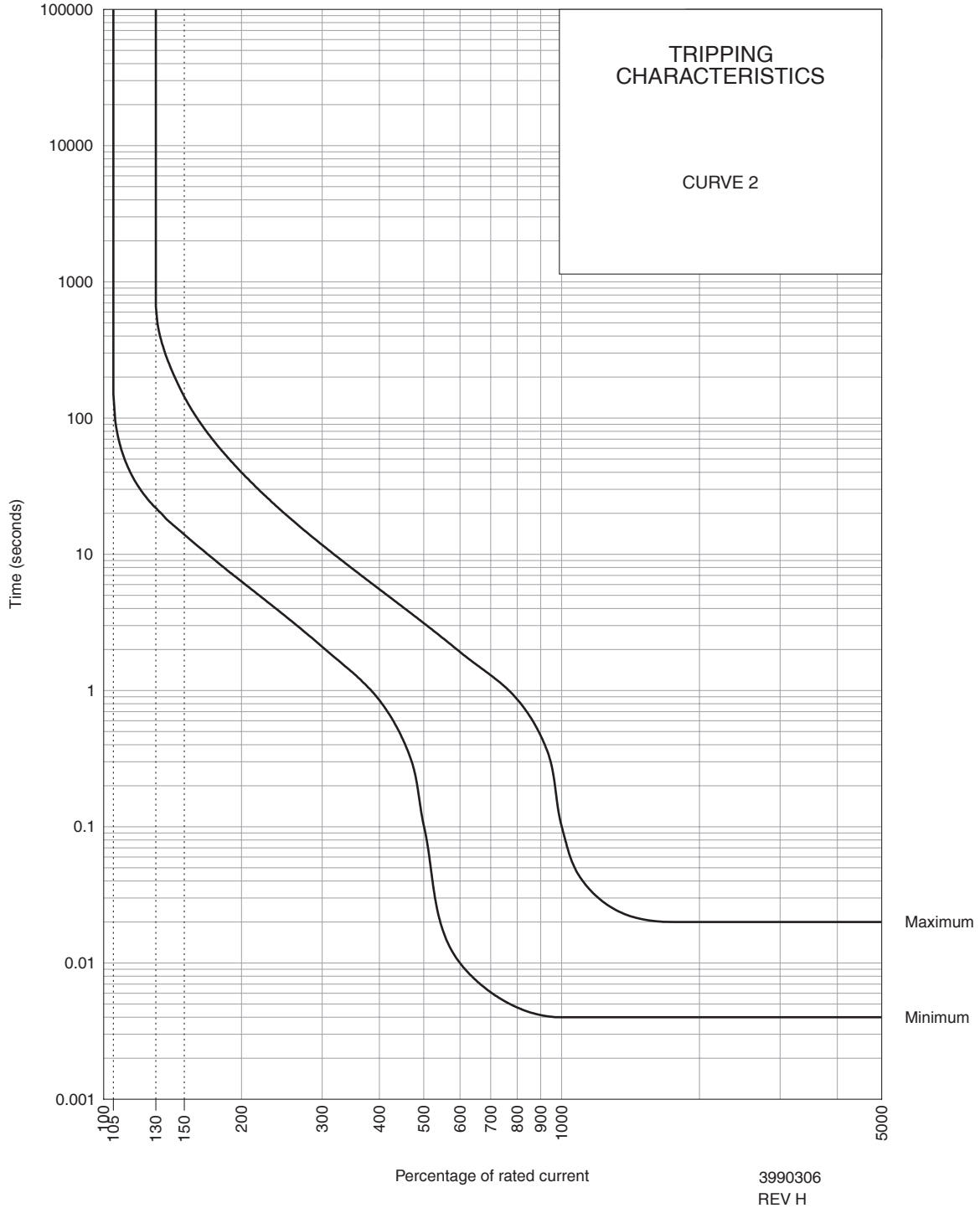
Ordering Information

Group	Code	Description	Comments
Group 1: Frame Type	Q	Earth Leakage	
Group 2: Product Type	F	415 Vac	
Group 3: No of Poles	36	Three pole plus switched neutral (3+N)	36 mm wide
Group 4: E-L Type	A	Overload	White and green handle
Group 5: Auxiliary / Additional Pole	-	Not applicable	
Group 6: Mounting	DM	Dual (DIN & mini rail) mount	Dual mount supplied in black shell only - 57 mm Escutcheon
Group 7: Time Delays	2	Medium time delay	Instantaneous Trip Point (x In) 5 – 10
Group 8: Current Ratings		6 - 32 A	
Group 9: Sensitivity	30 mA	30 mA	Standard
Group 10: Voltage	415 V	415 Vac	
Group 11 Future Use	-	Not applicable	For future use
Group 12 Future Use	-	Not applicable	For future use
Group 13 Future Use	-	Not applicable	For future use

For options not listed, please contact CBI

QF36 - Series Earth Leakages

Time Delay Curves

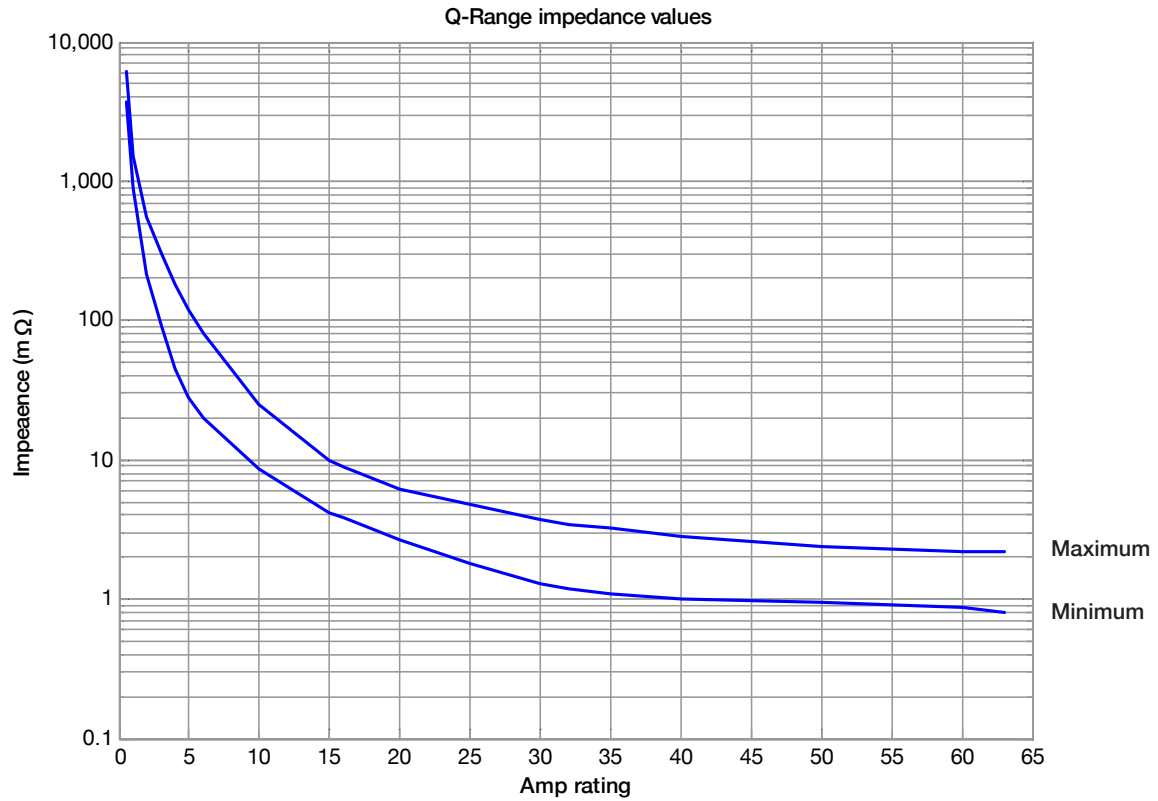


PERCENTAGE OF RATED CURRENT	105%	130%	145%	150%	200%	300%	400%	500%	600%	700%	800%	900%	1000%	2000%
MINIMUM TRIP TIME IN SECONDS	NO TRIP	22	15.4	14	6.3	2.1	0.85	0.1	0.001	0.006	0.005	0.041	0.004	0.004
MAXIMUM TRIP TIME IN SECONDS	NO TRIP	660	180	144	40	12	5.5	3	1.92	1.3	0.86	0.47	0.1	0.02

* The published time delay curves are generated at 30°C ambient temperature with the Circuit Breaker mounted in the up-right position. The "must hold", "must trip" and "instantaneous trip" current values are not affected by temperature, although delay time for the other operating current values may have to be adjusted using the temperature compensation curve which is available on request.

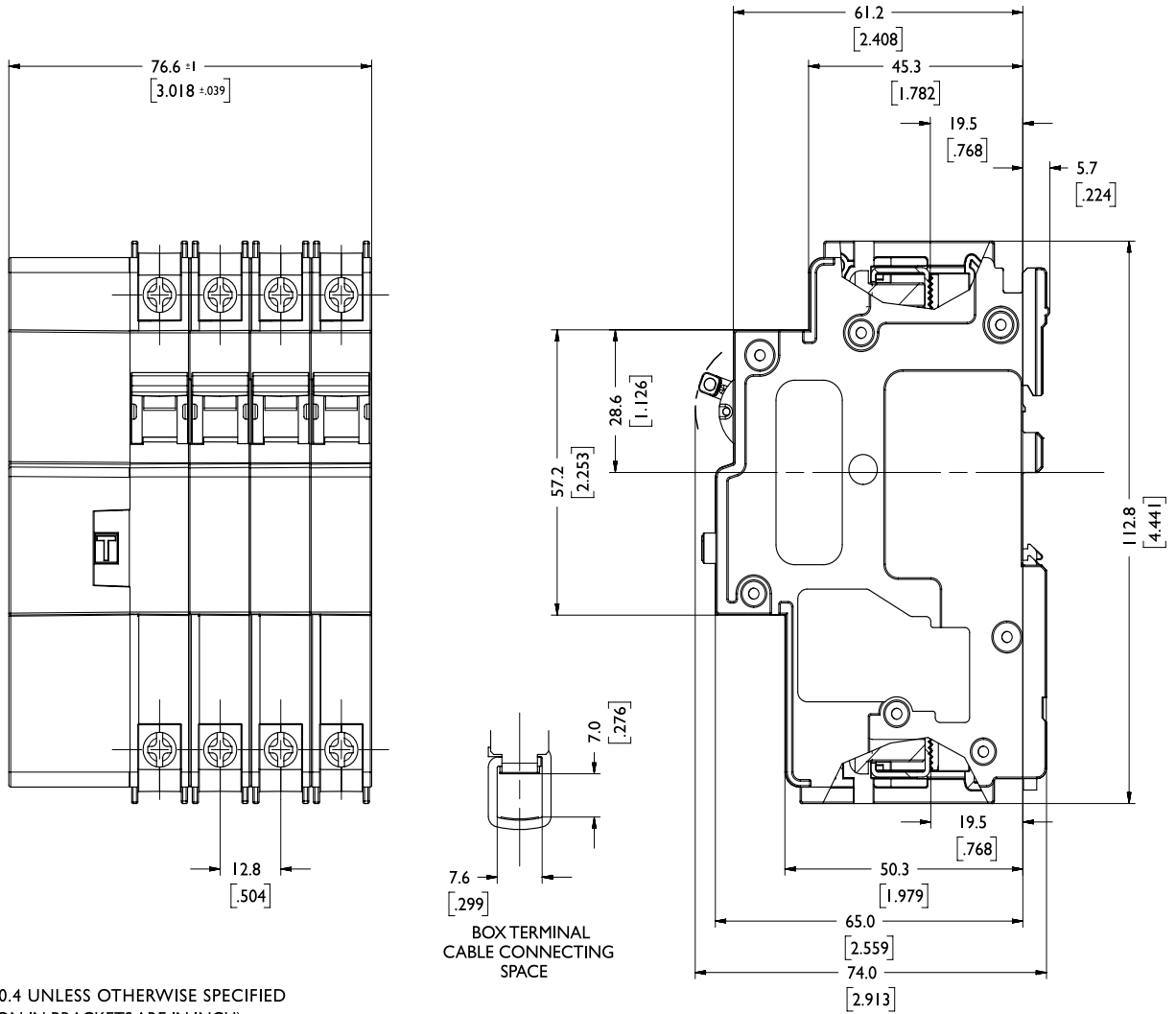
QF36 - Series Earth Leakages

Internal Impedance vs Current Rating



QF36 - Series Earth Leakages

Outline Dimensions: Dual (DIN & mini rail) mount



TOLERANCE ±0.4 UNLESS OTHERWISE SPECIFIED
(DIMENSION IN BRACKETS ARE IN INCH)

Please review our Customer Terms and Conditions on www.cbi-lowvoltage.co.za

All rights reserved. Unless otherwise indicated, all materials on these pages are copyrighted by CBI (Pty) Ltd. No part of these pages, either text or image may be used for any purpose other than personal use. Therefore, reproduction, modification, storage in a retrieval system or retransmission, in any form or by any means, electronic, mechanical or otherwise, for reasons other than personal use, is strictly prohibited without prior written permission. CBI (Pty) Ltd reserves the right to alter any details of this document without notice and while every effort is made to ensure the accuracy of the content, no warranty is given as to accuracy of this document and no responsibility will be accepted for error or misinterpretation and any resulting loss.

AUSTRALIA

CBI-electric: Australia
27 Wedgewood Rd, Hallam
Victoria 3803 Australia
Tel: +61 3 8752 9300
Fax: +61 3 9796 5407
Email: sales@cbi-electric.com.au
Website: www.cbi-electric.com.au

INDIA

CBI-electric: Asia
27/A, Nitesh Rio, Adjacent to Vakil
Garden, Thalaghattapura, Kanakapura
Road, Bangalore, 560109, India
Tel: +91-9880553153
Email: salesasia@cbi-electric.com
Website: www.cbibreakers.com
Website: www.cbi-lowvoltage.com

SOUTH AFRICA

CBI-electric: low voltage
Tripswitch Drive Elandsfontein
Gauteng South Africa
Tel: +27 11 928 2000
Fax: +27 11 392 2354
Email: cbi@cbi-electric.com
internationalsales@cbi-electric.com
Website: www.cbi-lowvoltage.com

USA

CBI-electric: North America
600 Eagleview Blvd Suite 300
Exton PA 19341 USA
Tel: +1 610 524 9949
Fax: +1 610 524 9945
E-mail: info@cbibreakers.com
Website: www.cbibreakers.com